



BENINCA
TECHNOLOGY TO OPEN

AUTOMATIONS FOR SWINGING GATES



PREMIER PR.45E24•PR.45EL

SURFACE MOUNTING

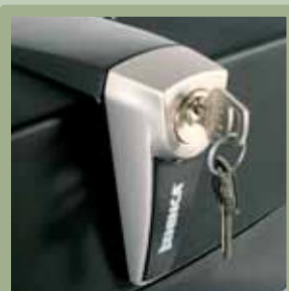
- Self-locking or reversible electromechanical operators suitable for gates installed on large posts
- With strong, articulated, galvanized steel anti-shearing arm
- Only one version for right/left hand side installations
- Equipped with limit switches in opening and closing



24 Vdc

- 24Vdc Self-locking electromechanical operator suitable for gates installed on large posts
- Amperometric anti-crushing control

DU.E2 arm not included



Unlock device by means of a personalized key



Equipped with limit switches in opening and closing



Prepared for battery back-up system

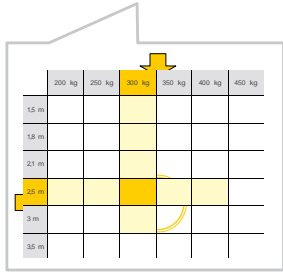
Gates R Us
 | Ph.: 9758 7157
sales@gatesrus.com.au
www.gatesrus.com.au

Factory 5 / 14 Edina Rd.
 Ferntree Gully Victoria,
 AUSTRALIA 3156

PREMIER:

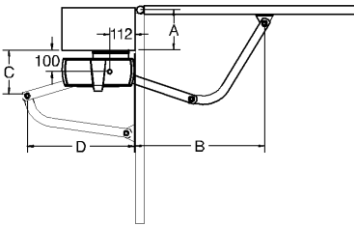
GUIDE FOR CHOOSING

Choose the weight and the length in the chart and find out the most suitable model.

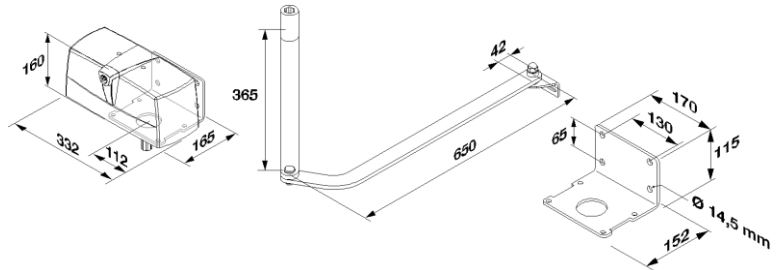


leaf max weight

| gate length | leaf max weight | | | | | | | | | |
|-------------|----------------------|----------------------|----------------------|----------------------|------------------------------|---------------------------------|---------------------------------|-------------------------|-------------------------|--|
| | 170 kg | 200 kg | 250 kg | 280 kg | 300 kg | 350 kg | 400 kg | 500 kg | 600 kg | |
| 1 m | BEN | BEN | BEN | PR.45E MBE24 | PR.45E MBE24 | PR.45E MBE24 | PR.45E PR.45ER PR.45E24 | PR.45E PR.45E24 | PR.45E PR.45E24 | |
| 1,5 m | BEN | BEN | PR.45E MBE24 | PR.45E MBE24 | PR.45E MBE24 | PR.45E MBE24 | PR.45E PR.45ER PR.45E24 | PR.45E PR.45E24 | PR.45E PR.45E24 | |
| 1,8 m | BEN | PR.45 E MBE24 | PR.45E MBE24 | PR.45E MBE24 | PR.45E MBE24 | PR.45E MBE24 | PR.45E PR.45ER PR.45E24 | PR.45E PR.45E24 | PR.45E PR.45E24 | |
| 2,1 m | PR.45E PR.45ER MBE24 | PR.45E PR.45ER MBE24 | PR.45E PR.45ER MBE24 | PR.45E PR.45ER MBE24 | PR.45E PR.45ER PR.45EL MBE24 | PR.45EL PR.45E PR.45ER PR.45E24 | PR.45EL PR.45E PR.45ER PR.45E24 | PR.45EL PR.45E PR.45E24 | PR.45EL PR.45E PR.45E24 | |
| 2,5 m | PR.45E MBE24 | PR.45 E MBE24 | PR.45E MBE24 | PR.45E MBE24 | PR.45EL PR.45E PR.45E24 | PR.45EL PR.45E PR.45E24 | PR.45EL PR.45E PR.45E24 | PR.45EL PR.45E PR.45E24 | PR.45EL | |
| 3 m | PR.45E PR.45E24 | PR.45E PR.45E24 | PR.45E PR.45E24 | PR.45E PR.45E24 | PR.45EL PR.45E PR.45E24 | PR.45EL PR.45E PR.45E24 | PR.45EL PR.45E PR.45E24 | PR.45EL | | |
| 3,5 m | PR.45EL | PR.45EL | PR.45EL | PR.45EL | PR.45EL | PR.45EL | PR.45EL | | | |
| 4 m | PR.45EL | PR.45EL | PR.45EL | PR.45EL | PR.45EL | | | | | |



| A | B | C | D |
|-----|-----|-----|-----|
| 50 | 883 | 277 | 429 |
| 150 | 851 | 181 | 466 |
| 200 | 828 | 117 | 475 |
| 250 | 800 | 32 | 469 |
| 300 | 846 | 28 | 468 |



INSTALLATION LIMITS PR.45E

| LEAF DIMENSION | MAX. WEIGHT |
|----------------|-------------|
| 2,1 m | 600 kg |
| 2,5 m | 500 kg |
| 3,0 m | 400 kg |

INSTALLATION LIMITS PR.45EL

| LEAF DIMENSION | MAX. WEIGHT |
|----------------|-------------|
| 2,1m | 600 kg |
| 2,5m | 600 kg |
| 3,0m | 500 kg |

INSTALLATION LIMITS PR.45E24

| LEAF DIMENSION | MAX. WEIGHT |
|----------------|-------------|
| 2,1m | 600 kg |
| 2,5m | 500 kg |
| 3,0m | 400 kg |

INSTALLATION LIMITS PR.45ER

| LEAF DIMENSION | MAX. WEIGHT |
|----------------|-------------|
| 2,1m | 400 kg |

| | |
|--------|--------|
| 3,5m * | 400 kg |
| 4,0m * | 300 kg |

* For leaves longer than 3,5 m we advise to install an electric lock

SETS AVAILABLE

- KPR 12 Sets per pallet
- KPR.24 12 Sets per pallet



| TECHNICAL DATA | PR.45E24 | PR.45EL |
|-----------------------|---------------|--------------|
| Power supply | 230 Vac | 230Vac |
| motor supply | 24 Vdc | 230Vac |
| Max. absorbed current | 9 A | 1.45 A |
| Torque | 320 Nm | 300 Nm |
| Opening time | 9" | 20" |
| Operation cycle | intensive use | 30% |
| Protection level | IP 44 | IP 44 |
| Operating temp | -20°C /+50°C | -20°C /+50°C |
| Leaf max dimension | 3 m | 4 m |
| Weight | 13 Kg | 13kg |
| Reversible | No | No |
| Items no. per pallet | 68 | 68 |

Gates R Us
 | Ph.: 9758 7157
sales@gatesrus.com.au
www.gatesrus.com.au
 Factory 5 / 14 Edina Rd.
 Ferntree Gully
 Victoria, AUSTRALIA 3156

